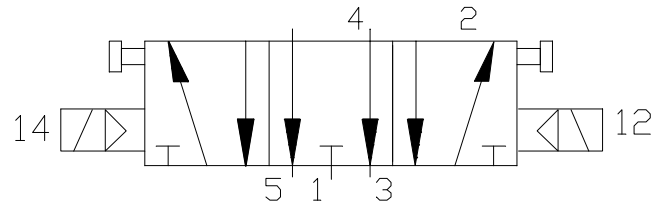
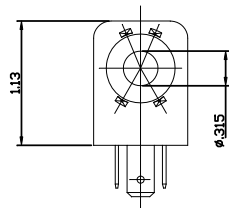
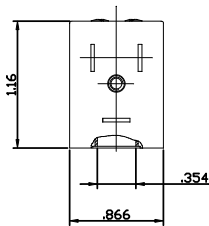


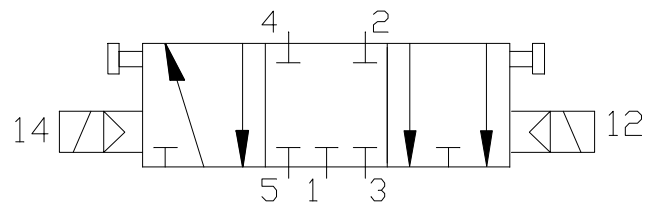
**Open Centers (S36A)**



**Coil**



**Closed Centers (S36C)**



**TECHNICAL DATA**

Standard voltages = 24 - 110 - 220V 50/60 Hz - 12  
 - 24V DC  
 Power input = 50/60 Hz inrush 7.5VA rated 5VA  
 Power input = DC 3W  
 Voltage tolerance = +or- 10%  
 Coil insulation = class "F" (for nylon coil)  
 Duty cycle = 100%  
 Protection class = IP65

Air supply connection = 1/4" NPT  
 Operating pressure = min. 2 Bar (30 PSI) - max.  
 8 Bar (120 PSI)  
 Din connector = 1/2" NPT  
 Flow factor = Kv 10.5  
 Max operating frequency = 600/1'  
 Room temperature limit = -4 F +158 F  
 Weight = 1.20 lb

**Max-Air** Technology Inc.

751 Hoff Road - O'Fallon, Missouri 63366 U.S.A.

www.max-airtechnology.com info@max-airtechnology.com