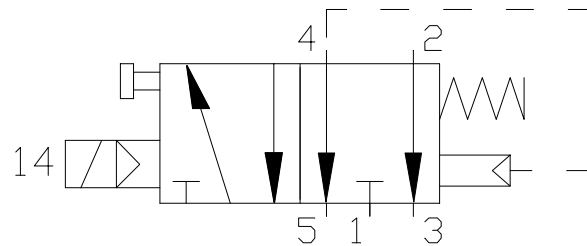
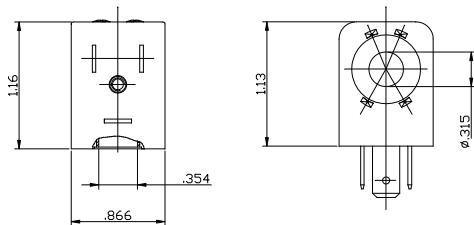


**Coil**

**Left Pilot**



**TECHNICAL DATA**

Standard voltages = 24 - 110 - 220V 50/60 Hz - 12  
- 24V DC  
Power input = 50/60 Hz inrush 7.5VA rated 5VA  
Power input = DC 3W  
Voltage tolerance = +or- 10%  
Coil insulation = class "F" (for nylon coil)  
Duty cycle = 100%  
Protection class = IP65

Air supply connection = 1/4" NPT  
Operating pressure = min. 2 Bar (30 PSI) - max.  
8 Bar (120 PSI)  
Din connector = 1/2" NPT  
Flow factor = Kv 10.5  
Max operating frequency = 600/1'  
Room temperature limit = -4°F~158°F  
Weight = 0.80 lb