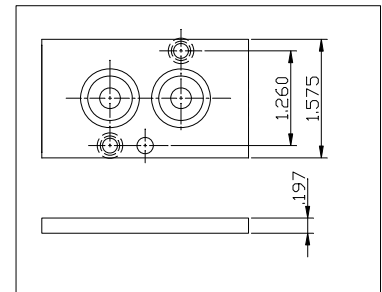
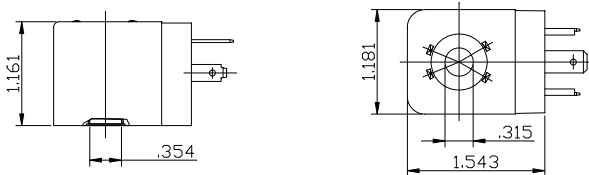


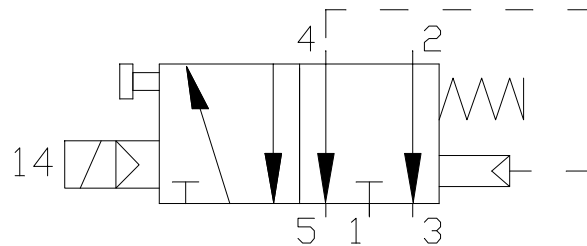
Spacer Plate



Coil



Left Pilot



TECHNICAL DATA

Standard voltage = 24V DC
 Power input = 50/60 Hz inrush 7.5VA rated 5VA
 Power input = DC 3W
 Voltage tolerance = $\pm 10\%$
 Coil insulation = class "F"
 Duty cycle = 100%
 Protection class = IP65
 Intrinsically Safe Coil

Air supply connection = 1/4" NPT
 Operating pressure = min. 2 Bar (30 PSI) - max. 8 Bar (120 PSI)
 Din connector = 1/2" NPT
 Flow factor = Kv 10.5
 Max operating frequency = 600/1'
 Room temperature limit = -40°F~122°F
 Weight = 0.80 lb

Hazardous Location Class
 Class I: Groups A, B, C and D
 Class II: Groups E, F and G
 Class III: Div. I

V Max.= 28V DC
 I Max.= 115 mA
 Max. Non-Hazardous Location Voltage= 250V
 Max. Valve Pressure= 115 psi

Max-Air Technology Inc.

751 Hoff Road - O'Fallon, Missouri 63366 U.S.A.
www.max-airtechnology.com info@max-airtechnology.com