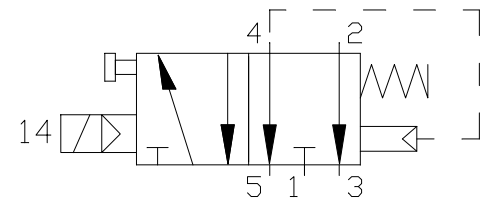
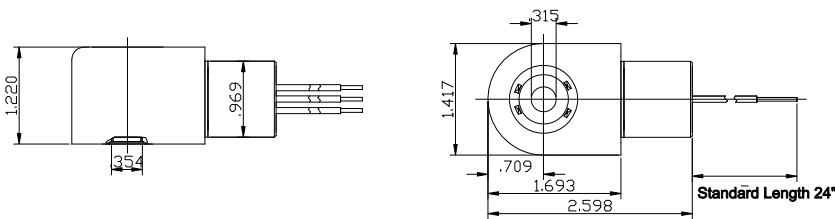


Coil

Left Pilot



TECHNICAL DATA

Standard voltages = 24 - 110 - 220V 50/60 Hz - 12
- 24V DC
Power input = 50/60 Hz inrush 7.5VA rated 5VA
Power input = DC 6W
Voltage tolerance = +or- 10%
Coil insulation = Class "H"
Duty cycle = 100%
Protection class = IP65

Air supply connection = 1/4" NPT
Operating pressure = Min. 2 Bar (30 PSI) - Max. 8 Bar
(120 PSI)
Conduit connection = 1/2" NPT
Flow factor = Kv 10.5
Max operating frequency = 600/1'
Room temperature limit = -4°F~140°F
Weight = 0.95 lb

Max-Air Technology Inc.

751 Hoff Road - O'Fallon, Missouri 63366 U.S.A.
www.max-airtechnology.com info@max-airtechnology.com