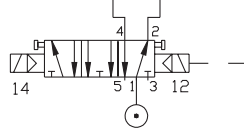
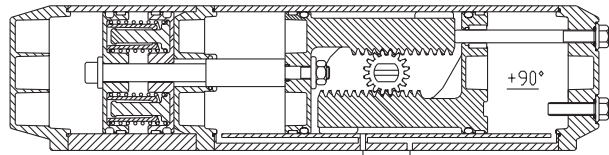
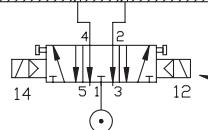
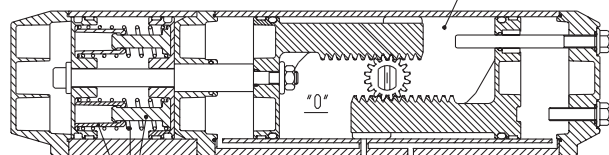
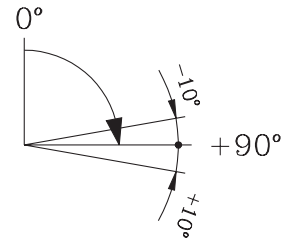


# ACTUATOR KIT

180° -90°/0°/+90° S.R.  
3 POSITIONS WITH  
CENTER RETURN



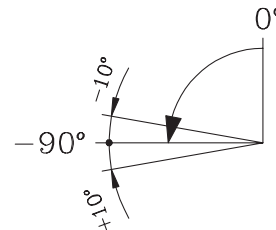
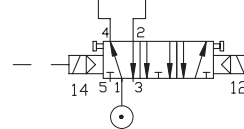
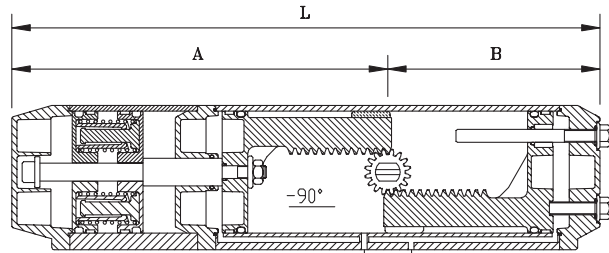
ACTUATOR "UT" x 180°



S.V. "NAMUR" 5/3 OPENED CENTERS

RETURN TO "0" POSITION AUTOMATICALLY BOTH  
WITH DROP OF POWER AND AIR PRESSURE

SPRING CARTRIDGE



## DIMENSIONS AND ORDERING CODE

		UT16	UT21	UT26	UT31	UT36	UT41	UT46	UT51	UT56	UT61
UP TO S3	A	8.583	9.213	10.787	11.299	12.598	14.213	17.874	17.323	21.260	21.496
	B	4.606	4.961	6.496	6.535	6.858	7.913	10.000	9.843	11.969	12.165
	L	13.189	14.173	17.283	17.835	19.449	22.126	27.874	27.165	33.228	33.661
	CODE	RC16-3*****	RC21-3*****	RC26-3*****	RC31-3*****	RC36-3*****	RC41-3*****	RC46-3*****	RC51-3*****	RC56-3*****	RC61-3*****
UP TO S6	A	10.906	10.906	14.055	14.488	15.984	18.150	22.559	22.441	26.929	27.795
	B	4.606	4.961	6.496	6.535	6.858	7.913	10.000	9.843	11.969	12.165
	L	15.512	16.693	20.551	21.024	22.835	26.063	32.559	32.283	38.898	39.961
	CODE	RC16-6*****	RC21-6*****	RC26-6*****	RC31-6*****	RC36-6*****	RC41-6*****	RC46-6*****	RC51-6*****	RC56-6*****	RC61-6*****

**Max-Air** TECHNOLOGY INC.

751 Hoff Road - O'Fallon, Missouri 63366 U.S.A.  
www.max-airtechnology.com sales@max-airtechnology.com