

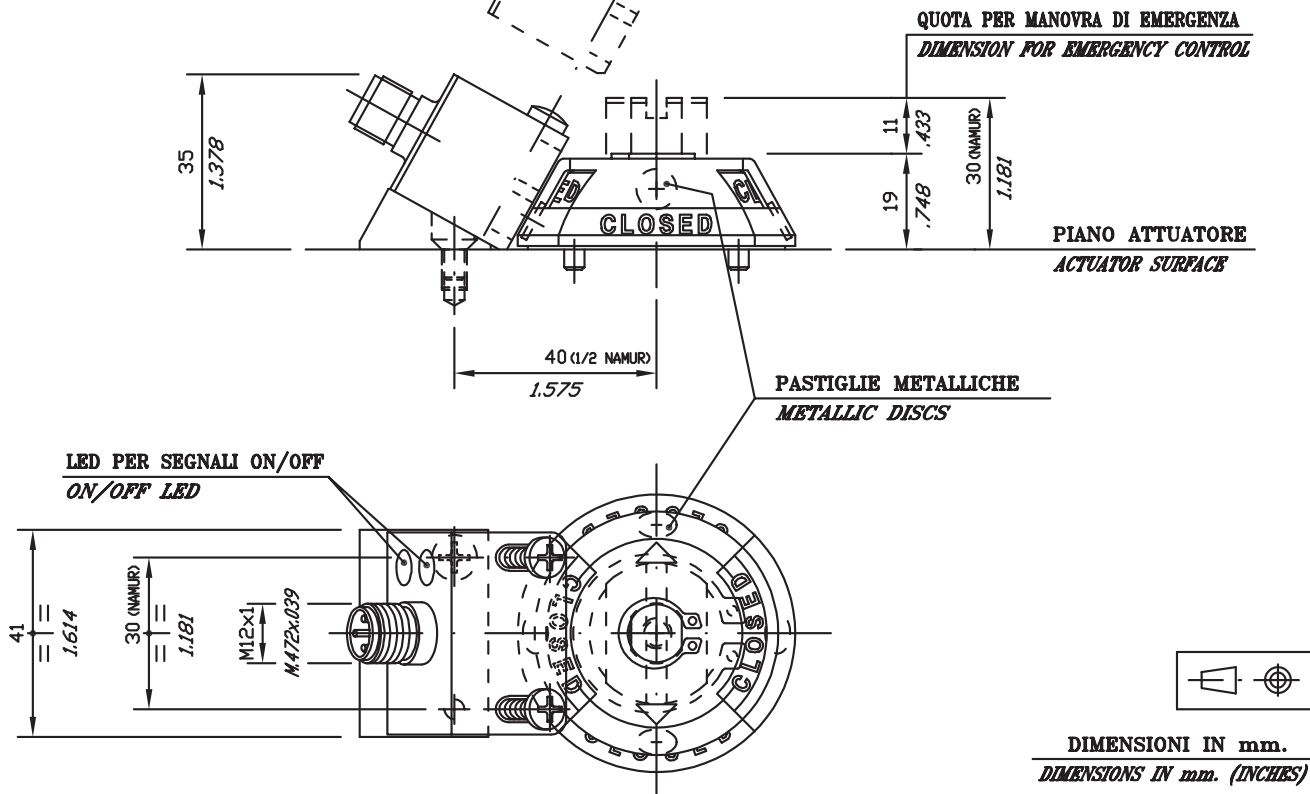


KIT PROXIMITY

"I.F.M." & UT

PER SEGNALI ON/OFF

FOR ON/OFF SIGNAL



DIMENSIONI IN mm.
DIMENSIONS IN mm. (INCHES)

MATERIALI STANDARD - STANDARD MATERIALS

TEMPERATURE - TEMPERATURE

SUPPORTO : Tecnopolimero
SUPPORT : Techno-polymer

INDICATORE DI POSIZIONE : Tecnopolimero
POSITION INDICATOR : Techno-polymer

STANDARD - 20°C + 80°C
STANDARD - 4°F + 176°F

PROXIMITY : Tecnopolimero PBTP
PROXIMITY : Techno-polymer PBTP

VITERIA : Acciaio inox AISI 304
ALL SCREWS : Stainless steel AISI 304

GRADO DI PROTEZIONE = IP 65/67
PROTECTION DEGREE = IP65/67 (NEMA 4)

CODICI DI ORDINAZIONE - ORDERING CODE

	KIT PROXIMITY "IFM" EEx Ia IIC T6 CON CONNETTORE	KIT PROXIMITY "IFM" EEx Ia IIC T6 CON CAVO 2 mt.	KIT PROXIMITY "IFM" PNP NO 10:36 Vdc CON CONNETTORE	KIT PROXIMITY "IFM" PNP NO 10:36 Vdc CON CAVO 2 mt.	KIT PROXIMITY "IFM" 20÷250 Vac CON CONNETTORE	KIT PROXIMITY "IFM" 20÷250 Vac CON CAVO 2 mt.	KIT PROXIMITY "IFM" EExi CON COLLEGA- MENTO PER E.V.
UT	PROXIMITY "IFM" KIT EEx Ia IIC T6 WITH PLUG	PROXIMITY "IFM" KIT EEx Ia IIC T6 WITH CABLE 78.74 IN	PROXIMITY "IFM" KIT PNP NO 10:36 Vdc WITH PLUG	PROXIMITY "IFM" KIT PNP NO 10:36 Vdc WITH CABLE 78.74 IN	PROXIMITY "IFM" KIT 20÷250 Vac WITH PLUG	PROXIMITY "IFM" KIT 20÷250 Vac WITH CABLE 78.74 IN	PROXIMITY "IFM" KIT EExi WITH CABLE FOR S.V.
05/06-15/16-17/17U	AC24-A41UB0/A	AC24-A42UB0/A	AC24-A43UB0/A	AC24-A44UB0/A	AC24-A45UB0/A	AC24-A46UB0/A	AC24-A47UB0/A
20/21-25/26	AC24-A41UF0/A	AC24-A42UF0/A	AC24-A43UF0/A	AC24-A44UF0/A	AC24-A45UF0/A	AC24-A46UF0/A	AC24-A47UF0/A
30/31-35/36	AC24-A41UJ0/A	AC24-A42UJ0/A	AC24-A43UJ0/A	AC24-A44UJ0/A	AC24-A45UJ0/A	AC24-A46UJ0/A	AC24-A47UJ0/A
40/41-45/46-50/51 55/56-60/61-65/66	AC24-A41UM0/A	AC24-A42UM0/A	AC24-A43UM0/A	AC24-A44UM0/A	AC24-A45UM0/A	AC24-A46UM0/A	AC24-A47UM0/A

